

--	--	--	--	--

--	--	--	--

0420/01

May/June 2008

Candidates answer on the Question Paper.

No Additional Materials are required.

Write your Centre number, candidate number and name on all the work you hand in.

Write in dark blue or black pen.

You may use a soft pencil for any diagrams, graphs or rough working.

Do not use staples, paper clips, highlighters, glue or correction fluid.

DO **NOT** WRITE IN ANY BARCODES.

Answer **all** questions.

No marks will be awarded for using brand names of software packages or hardware.

At the end of the examination, fasten all your work securely together.

The number of marks is given in brackets [] at the end of each question paper.

For Examiner's Use

This document consists of **17** printed pages and **3** blank pages.

1 Explain, using examples where appropriate, the meaning of these computer terms.

(a) batch processing

.....

.....

..... [2]

(b) interrupt

.....

.....

..... [2]

(c) top down design

.....

.....

..... [2]

(d) laptop computer

.....

.....

..... [2]

(e) trackerball

.....

.....

..... [2]

2 List **two** tasks carried out by an operating system.

1

.....

.....

2

.....

..... [2]

3 A company has decided to set up call centres in different countries. Regular training sessions, using video conferencing, will be carried out.

(a) Give **one** advantage of having call centres in different countries.

.....

..... [1]

(b) Give **one** disadvantage of having call centres in different countries.

.....

..... [1]

(c) Give **one** advantage of using video conferencing to carry out the training.

.....

..... [1]

(d) Give **one** disadvantage of using video conferencing to carry out the training.

.....

..... [1]

(e) Describe another method of training staff using modern computer technology.

.....

.....

..... [1]

- 4 Name **two** types of automatic data capture and give **one** application for each type named.

Type 1

Application 1

.....

.....

Type 2

Application 2

.....

..... [4]

- 5 Computer systems can be affected by viruses.

(a) What is a virus?

.....

..... [1]

(b) Give **one** effect of a virus.

.....

..... [1]

(c) How can a system be protected from viruses?

.....

.....

..... [1]

(d) Why would backing up data **not** guard against the effect of a virus?

.....

..... [1]

- 6 Students' records are kept on a stand-alone computer (no network connections) in the principal's office.

For
Examiner's
Use

- (a) It is sometimes necessary to alter students' records. To do this efficiently, individual records need to be retrieved quickly.

(i) What type of file access should be used?

..... [1]

(ii) What type of magnetic medium allows this type of access?

..... [1]

- (b) Give **two** examples of when a student's record would need to be altered.

Example 1

.....

Example 2

..... [2]

- (c) Students are concerned that their personal data could be misused. Name **two** methods that could be used to ensure personal data is kept secure.

Method 1

.....

Method 2

..... [2]

- (d) Examination results are stored in students' records as marks out of 100. Give **two** different validation checks that could be performed on students' marks.

Check 1

.....

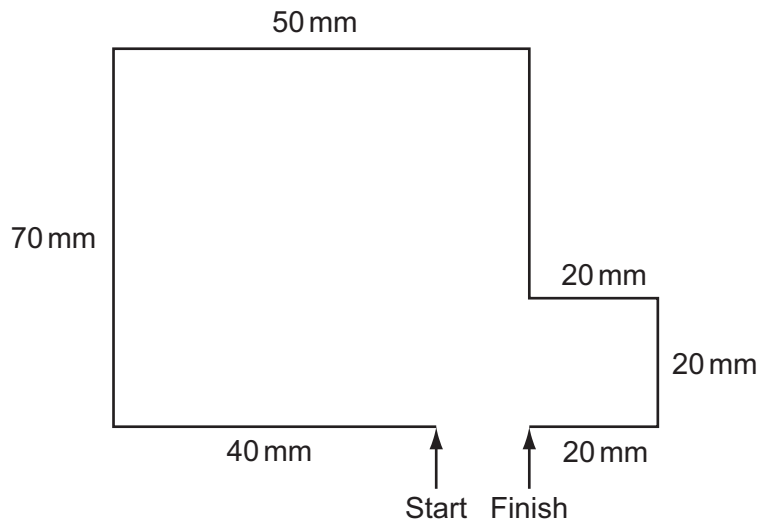
Check 2

..... [2]

7 A floor turtle can use the following instructions:

Instruction	Meaning
FORWARD <i>n</i>	Move <i>n</i> mm forward
BACKWARD <i>n</i>	Move <i>n</i> mm backward
LEFT <i>d</i>	Turn left <i>d</i> degrees
RIGHT <i>d</i>	Turn right <i>d</i> degrees
PENUP	Lift the pen
PENDOWN	Lower the pen
REPEAT <i>n</i>	Repeat the following instructions <i>n</i> times
ENDREPEAT	Finish the REPEAT loop

For
Examiner's
Use



Complete the set of instructions to draw the above shape.

PENDOWN

LEFT 90

FORWARD

.....

.....

.....

.....

.....

.....

.....

.....

.....

.....

.....

.....

.....

.....

.....

[4]

- 8 A student decides to use an Internet search engine at home to help her work on her Geography project. She types in:

For
Examiner's
Use

COUNTRIES EXPORTS 2007

and gets over 11 million results.

- (a) She wanted to know which South American countries exported coffee in 2007. How could her search be refined to reduce the number of results?

.....
..... [1]

- (b) Give **one** advantage of searching for information on the Internet rather than using books.

.....
..... [1]

- (c) Many people have fears about searching for information on the Internet. Give **two** reasons for these fears.

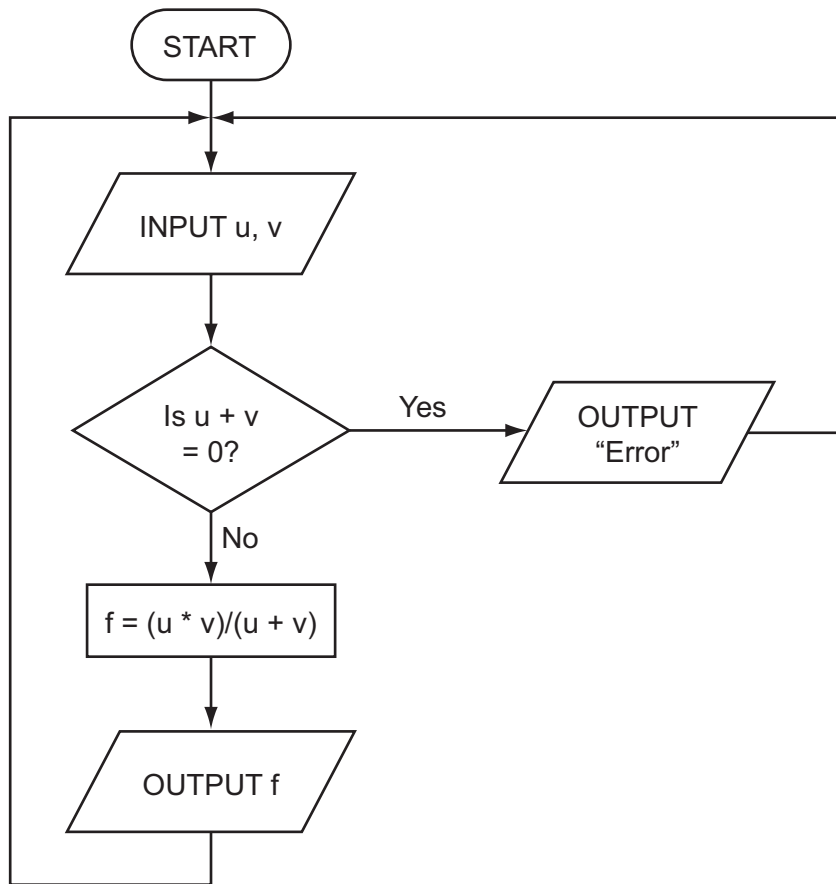
1
.....
2
..... [2]

- (d) The student wishes to use files stored on her home computer when she is back in class using one of the school's computers. How could she do this?

.....
.....
..... [1]

- 9 The following flowchart inputs **two** numbers, carries out a calculation and then outputs the result.

For
Examiner's
Use



- (a) Complete the following table for the **three** sets of input data.

INPUT		OUTPUT
u	v	
5	5	
6	-6	
12	4	

[3]

- (b) The above algorithm has been placed in a library of routines. Give **one** advantage of doing this.

.....

.....

..... [1]

10 A computer system comes equipped with DVD writer/reader, hard disk drive and RAM.

(a) Give a different use for each of these forms of memory.

DVD

.....

Hard Disk

.....

RAM

..... [3]

(b) Give another example of a memory device and give **one** advantage of the named device.

Example

Advantage

.....

..... [2]

11 Write down **four** requirements of a Data Protection Act.

1

.....

.....

2

.....

.....

3

.....

.....

4

.....

..... [4]

- 12** Algorithms and programs use loops to control the number of times a particular procedure is used.

Two methods are **repeat ... until** and **for ... to**.

- (a)** Write a procedure using both these loop methods to input 20 numbers into a variable called **x**.

- (i) repeat ... until**

.....

.....

.....

.....

..... [2]

- (ii) for ... to**

.....

.....

.....

.....

..... [2]

- (b)** Name another loop structure.

.....

..... [1]

13 A media retail company has decided to sell CDs and DVDs using an Internet only shop.

(a) Describe **three** features you might expect to see on the shop's website.

- 1
.....
.....
- 2
.....
.....
- 3
.....
..... [3]

(b) Give **two** advantages to customers of shopping using the Internet.

- 1
.....
.....
- 2
.....
..... [2]

- 14 (a) Computer systems are widely used now in simulations such as crash testing new cars. Give **two** advantages of using simulations rather than carrying out actual testing.

1

.....

2

..... [2]

- (b) Virtual reality is often used in simulations. Describe **two** man-machine interface devices which allow communication with virtual reality systems.

1

.....

2

..... [2]

15 A systems analyst has designed a new computer system for a large company.

For
Examiner's
Use

- (a) Name **two** methods of implementing this new system and describe **one** advantage of using each method. (Do **not** give the same advantage for Method 1 and Method 2.)

Method 1:

Advantage:

.....

.....

Method 2:

Advantage:

.....

..... [4]

- (b) Before the system is implemented, it needs to be fully tested. One of the tests will be to check that the company does not pay a worker more than \$800 per week.

Use examples of a worker's pay to explain what is meant by normal test data, abnormal test data and extreme test data.

Normal

.....

.....

Abnormal

.....

.....

Extreme

.....

..... [3]

- 16** The washroom in a hotel uses lights controlled by a computer system. If the washroom is unoccupied for 10 minutes, the lights go out automatically. As soon as someone enters, the lights come on.

(a) How can the system determine if anyone is in the washroom?

.....

.....

.....

.....

..... [2]

(b) Write down a set of instructions which would enable the computer to decide when to turn out the lights.

.....

.....

.....

.....

.....

..... [3]

(c) Give **one** advantage of this automatic system.

.....

..... [1]

17 An expert system is to be written to identify chemical compounds.

For
Examiner's
Use

(a) Describe how the expert system would be created.

.....

.....

.....

.....

.....

.....

.....

.....

..... [3]

(b) How would a user be confident that the output from this expert system was correct?

.....

..... [1]

(c) Give **one** advantage of using an expert system to identify chemical compounds.

.....

.....

..... [1]

- 18 An entertainment company keeps monthly records on a spreadsheet of all its organised rock music events. The information for May 2008 is shown below.

For
Examiner's
Use

	A	B	C	D	E	F	G
1	Event	No. of seats	No. seats sold	Seat price (\$)	Total money taken (\$)	Cost of event (\$)	Profit or Loss
2	The Bugs	4000	1700	45	76500	85000	Loss
3	Static Rocks	3000	3000	50	150000	100000	Profit
4	The Cold Apes	4000	2150	35	75250	90000	Loss
5	Monophonics	5000	4000	35	140000	125000	Profit
6	Human Senses	4000	4000	60	240000	180000	Profit
7	Ice Patrol	3000	1500	50	75000	80000	Loss
8	The Manual	2000	1650	60	99000	115000	Loss
9							

- (a) (i) What formula is in cell E2 to work out the total money taken for *The Bugs* event?

..... [1]

- (ii) Complete the following statement for cell G4:

=IF (E4 >, "Profit",) [2]

- (iii) Total cost of all events is to be shown in cell F9. What formula needs to be placed in F9?

..... [1]

- (b) If the value in C7 was changed to 2000, which cells would be automatically updated?

..... [2]

- (c) Describe how to find the *break even point* for any given event (i.e. when cost of event = total money taken).

.....

 [2]

- withdrawal is refused if amount entered > current balance
- withdrawal is refused if amount entered > daily limit
- if current balance < \$100, then a charge of 2% is made
- if current balance \geq \$100, no charge is made

Write an algorithm which inputs a request for a sum of money, decides if a withdrawal can be made and calculates any charges. Appropriate output messages should be included.

[5]

BLANK PAGE

BLANK PAGE

BLANK PAGE

Permission to reproduce items where third-party owned material protected by copyright is included has been sought and cleared where possible. Every reasonable effort has been made by the publisher (UCLES) to trace copyright holders, but if any items requiring clearance have unwittingly been included, the publisher will be pleased to make amends at the earliest possible opportunity.

University of Cambridge International Examinations is part of the Cambridge Assessment Group. Cambridge Assessment is the brand name of University of Cambridge Local Examinations Syndicate (UCLES), which is itself a department of the University of Cambridge.